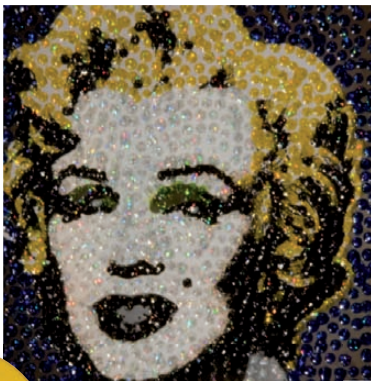


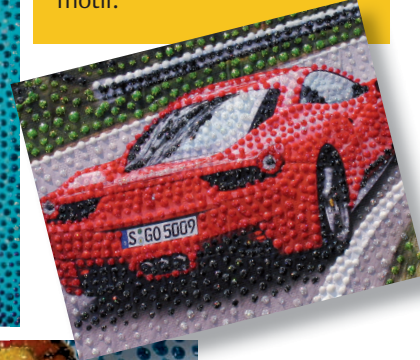
# POINT PEN

## POINTILLISM

Start in the middle and follow the lines until the entire picture is covered.

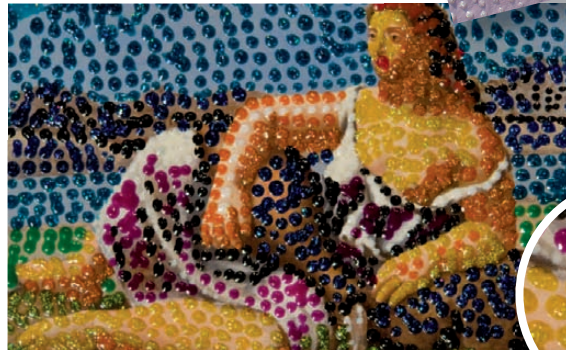


The point-effect can create a completely new expression on a painting, photo or any other motif.



PointPen creates a beautiful and stunning effect on top of for example a postcard or on portraits.

It can also be used to decorate boxes or the like.



## Point Pen

Pointillism is a painting technique using small dots instead of strokes with a paintbrush.

Using PointPen anyone can create pointillism. By slightly pressing the bottle a fine, equal and rounded pearl-like dot appears.

PointPen creates a beautiful and stunning effect on for example postcards, portraits or paintings. The motif can become quite personal – creating an expression according to where dots and colours are placed.

Drying time approximately. 30 minutes.

28 ml bottles with tipped spout.



				
1203 Yellow	1210 Orange	1214 Red	1216 Pink	1219 Violet
				
1220 Blue	1267 Turquoise	1222 Kiwi	1240 Black	1260 Clear



Schjerning

SINCE 1886 · MADE IN DENMARK



ISO 14001:2004

Schjerning Farver A/S  
DK-8400 Ebeltøft  
www.schjerning-farver.com